



SNHPC

438 Dubuque Street, Manchester, NH 03102-3546
Telephone (603) 669-4664 Fax (603) 669-4350
www.snhpc.org

Upcoming Special Meeting Forums

SNHPC Annual Meeting, Friday, September 11, 2009 at 6:30 p.m. at the Puritan Conference Center located on 245 Hooksett Road in Manchester, NH

Liquid Assesst-A Special Forum, Tuesday, June 23, 2009 at 6:00 p.m. at the PSNH Energy Park located on 780 Commercial Street in Manchester

Kindly RSVP to Linda Moore at 669-4664, or ask for David Preece for more information.

PRSRT STD
U.S. Postage
PAID
Permit No. 295
Manchester, NH



SNHPC

SERVING THE REGION SINCE 1966

Visions

VOLUME 33, NO. 4

THE SOUTHERN NEW HAMPSHIRE PLANNING COMMISSION NEWSLETTER

JUNE 2009

Inside This Issue

- Safety Improvements for Intersections in the City of Manchester 1
- Piscataquog River Watershed Land Conservation Plan 1
- Fourth Annual Student Competition 2
- General John Stark Scenic Byway Seeking National Designation 2
- Regional Economic Development Plan 3
- Canadian Institute of Transportation Engineers Annual Conference, Montreal, Quebec 3
- Statewide Coordination of Community Transportation Services - Region 8 RCC Update 3
- Hazard Mitigation Updates 4

SNHPC Staff:

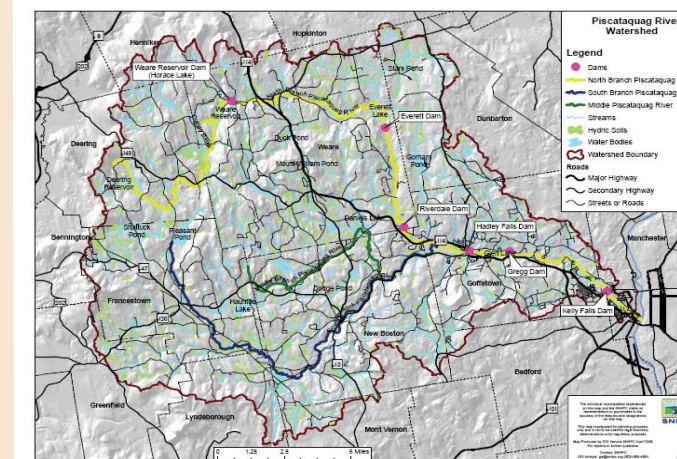
- David J. Preece, AICP
Executive Director
- Linda Moore
Office Administrator
- Melody Cumberbatch
Clerical Assistant
- Linda J. Shinn
Bookkeeper
- Jack Munn, Jr., AICP
Chief Planner
- Jillian Harris
Planner
- Rachel Kelly
Associate Planner
- Pamela H. Garrity
Planning Technician
- Timothy H. White, AICP
Senior Transportation Planner
- Jihong "Julie" Chen, Ph.D.
Transportation Planner/
Engineer
- Matthew Caron
Transportation Planner
- Amy Kizak
GIS Analyst
- Linda Madorma
GIS Analyst
- Brian Deguzis
Planning Intern
- Mary Brundage
Planning Intern
- Susan St. Pierre
Planning Intern

Safety Improvements for Intersections in the City of Manchester

Since late 2008, the Southern New Hampshire Planning Commission (SNHPC) staff has been studying high accident intersections in the city of Manchester through the use of Statewide Planning and Research (SPR) funds. The purpose of the study is to reduce traffic accidents through the development of appropriate solutions and increase safety and traffic efficiency in and around these locations. Through analysis of accident data and intersection investigations, the study team identified locations experiencing high accidents during the past four years, identified factors contributing to accidents, and provided appropriate countermeasures that would effectively reduce accidents and related damage. So far, the study findings for the Beech Street/Bridge Street, Beech Street/Cilley Road, Maple Street/Spruce Street, and Maple Street/Hanover Street intersections have been presented to City staff. The City will apply for Highway Safety Improvement Program (HSIP) funds to implement the appropriate countermeasures identified in the study to improve travel and safety at the four intersections. The SNHPC is currently assisting the City with the application. For more information, please contact David Preece or Julie Chen at 669-4664, or via email dpreece@snhpc.org or jchen@snhpc.org.



Piscataquog River Watershed Land Conservation Plan



Beginning in July 2009, SNHPC will be facilitating and preparing a comprehensive Land Conservation Plan for the Piscataquog River Watershed, which will seek specific land conservation actions and zoning amendments to enhance the protection of the most ecologically significant lands and aquatic resources within the watershed. These resources include terrestrial and aquatic plans, wildlife habitats, riparian zones, intact and productive forest blocks, including the headwater streams within the watershed.

This effort will require the assistance of a number of Conservation Partners, including the eleven municipalities located within the watershed, the Piscataquog Land Conservancy, Piscataquog River Local Advisory Committee, The Russell Foundation, Francetown Land Trust and the Monadnock Conservancy, the Central, Southwest and Nashua Region Planning Commissions, and the University of New Hampshire Cooperative Extension Office. The Piscataquog River Watershed drains 220 square miles with the river's main stem entering the Merrimack River in the City of Manchester (see attached map). Southern New Hampshire Planning Commission is currently working with the Piscataquog River Local Advisory Committee to update the Piscataquog River Management Plan. For more information contact David Preece or Jack Munn at 669-4664 or dpreece@snhpc.org and jmunn@snhpc.org.

Officers

- Raymond P. Clement, Chairman, Manchester
- Harold "Bo" Strong, Vice Chairman, Raymond
- Barbara J. Griffin, Treasurer, Goffstown
- Jean G. Methot, Secretary, Chester

Board of Commissioners

- | | |
|------------------------------------|------------------------------------|
| Charles M. Worster, Auburn | Jo Ann Duffy, Goffstown |
| William G. Herman, Auburn | Anthony Marts, Alt., Goffstown |
| Ronald F. Poltak, Alt., Auburn | Michel N. Jolin, Hooksett |
| David J. Danielson, Bedford | Richard G. Marshall, Hooksett |
| Michael Izbicki, Bedford | Sharon M. Carson, Londonderry |
| Karen McGinley, Bedford | Arthur E. Rugg, Londonderry |
| Edward P. Moran, Jr. Alt., Bedford | Donald Moskowitz, Londonderry |
| Harold Newberry, Alt. Bedford | Debra Paul, Alt., Londonderry |
| William Duschatko, Alt., Bedford | Deborah Lievens, Alt., Londonderry |
| William Stergios, Candia | Peter D. Capano, Manchester |
| Elizabeth Kruse, Candia | Daniel P. O'Neil, Manchester |
| Cynthia J. Robinson, Chester | Elias "Skip" Ashooh, Manchester |
| Frederick J. McGarry, Deerfield | Robert MacKenzie, Alt., Manchester |
| Gile Beye, Deerfield | Kevin McCue, Alt., Manchester |
| Brian Chirichiello, Alt., Derry | Brent Armstrong, New Boston |
| John P. Dowd, Derry | Gretchen Gott, Raymond |
| David N. Gomez, Derry | Jonathan Wood, Raymond |
| Joel Olbricht, Derry | Terry Knowles, Weare |
| Beverly Ferrante, Derry | Ian B. McSweeney, Weare |
| Henry C. Boyle, Goffstown | |

Hazard Mitigation Updates



The Southern New Hampshire Planning Commission is completing the process of Local Hazard Mitigation Plan updates for 2009. Local Mitigation Plans must be reviewed and re-approved by FEMA every five years.

A Hazard Mitigation Plan is designed to reduce or eliminate

risk to people and property from a range of hazards including wildfires, earthquakes, hurricanes, winter storms, and flooding. The plan identifies the community's susceptibility and vulnerability to each hazard, essential facilities at risk, and proposes new strategies to potentially mitigate or reduce future damages.

The updates look at the current plan and identify any new risks or critical facilities that need to be added since it was implemented. Mitigation techniques were reviewed and updated for these risks as well. Updating Local Mitigation Plans at least every five years is important, so the community can look at what natural hazards may have happened, how they were handled and what can do done better or differently in each specific situation.

The following towns that updated their Hazard Mitigation Plans along with the dates that they were adopted are listed below:

- Goffstown - April 13, 2009
- Bedford - April 22, 2009
- Raymond - May 4, 2009
- Derry - May 5, 2009

For more information about Hazard Mitigation Plans contact Jillian Harris at 669-4664 or jharris@snhpc.org.

Fourth Annual Student Competition Winners Announced

On May 26, 2009, the winners of the Southern New Hampshire Planning Commission (SNHPC) 4th Annual Student Competition were recognized for their outstanding work at the Commissioner's meeting. The winners are: Isabella Anne Craig, Riddle Brook School (Bedford), Grade 4; Makayla Morse, Hallsville School (Manchester), Grade 3; Hannah Lynn Riley, Memorial School (Bedford), Grade 2; Lindsey Robbins, Matthew Thornton School (Londonderry), Grade 4; Tara Sullivan, New Boston Central School, Grade 5; and Alexandra Terrio, Jewett Street School (Manchester), Grade 5.

Southern New Hampshire Planning Commission received 60 entries from six of the schools in our region. A winner was selected from each of the schools. The following Commission Members volunteered to serve as judges in the competition: Ray Clement, City of Manchester; Tony Marts, Town of Goffstown; David Danielson and Bill Duschatko, Town of Bedford; and Gretchen Gott, Town of Raymond. The Commission Members met in late April to review and evaluate the entries. The evaluation criteria were based upon appearance/originality, organization, ideas presented, and effort in preparation.



Similar to prior years, we asked students to look at the SNHPC region as a whole and not just within their own community. Students were asked to think about their personal experiences within the SNHPC region and what they feel are the positive and negative issues that it faces. The theme this year was focused on Sustainability and Green Communities.

SNHPC would like to thank the following sponsors for their generous donations: Apple Barn Garden Center, Bedford Fields Garden Center, Caruso Brothers Landscaping Garden Center, The Common

Man Family of Restaurants, Faulkner's Landscaping & Nursery, Goffstown Ace Hardware, Manchester Monarchs, Manchester Wolves, New Hampshire Fisher Cats, New Hampshire Local Government Center, St. Mary's Bank, Shady Hill Nursery, TD Banknorth, and the University of New Hampshire Manchester.

The winning posters and essays are posted on SNHPC website, www.snhpc.org.

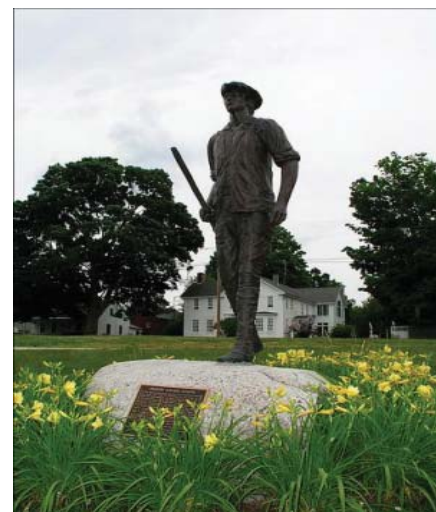
The General John Stark Scenic Byway Seeking National Scenic Byway Designation

The General John Stark Scenic Byway is a historical and cultural route that runs through Goffstown, Weare, New Boston and Dunbarton. The byway is named for General John Stark, NH's best known Revolutionary War hero. There are many features along the route, such as the Molly Stark Cannon in New Boston, the Molly Stark House and Caleb Stark Statue in Dunbarton, which tells the story of General John Stark and his family. Aside from its rich history, the General John Stark Scenic Byway captures the beauty and charm of quintessential small town New Hampshire.

Currently, Southern New Hampshire Planning Commission (SNHPC) has applied for a National Scenic Byway designation with the Federal Highway Administration (FHWA). In order to apply for the national designation, a Corridor Management Plan was needed that addressed 14 key points required by the FHWA. SNHPC staff and the General John Stark Council worked diligently to complete the application, meeting the December 17, 2008 deadline.

While waiting for the decision from FHWA on the national designation, the General John Stark Scenic Byway is eligible to apply for grant money as a state designated byway. The Council met once again this past February to review the Corridor Management Plan and discuss applying for grant money on projects outlined in the plan. One of the key initiatives of the plan is to market the byway. It was decided that a grant application should be submitted to fund the development of a website, logo, map and brochure. The grant application was submitted in March. The approval of the grant and/or designation should be known by the end of this summer.

For more information, contact Mary Brundage at mbrundage@snhpc.org or 669-4664.



Regional Economic Development Plan



Beginning in July 2009, Southern New Hampshire Planning Commission (SNHPC) for the first time will be facilitating and preparing an Economic Development Plan for the region. This plan will build upon the Metro Center - NH Strategic Plan, a partnership between SNHPC, Greater Manchester Chamber of Commerce and the New Hampshire Economic Department of Resources and Economic Development (NH DRED) to encourage communities to look beyond their municipal town lines and to collectively promote the Greater Manchester region as a desirable business location. The plan will set forth economic development strategies for implementing both short and long term economic development projects and services within the region. An Economic Development Advisory Committee will be formed consisting of representatives from the region's municipalities and Metro Center - NH to guide the development of the plan. Economic assets profiles will be prepared for each municipality and the region identifying strengths, weaknesses, opportunities and threats as well as an inventory and maps of potential areas and properties eligible under RSA 162-N for Economic Development Revitalization Zones designation, including the

region's existing and future public infrastructure system. In addition, a cluster analysis of the region's existing business climate will be performed which will offer the Metro Center - NH and the municipalities valuable economic development marketing data. Finally, visioning workshops will be held to identify specific recommendations. For more information contact David Preece or Jack Munn at 669-4664 or dpreece@snhpc.org and jmunn@snhpc.org.

Canadian Institute of Transportation Engineers Annual Conference – Montreal, Quebec

Southern New Hampshire Planning Commissions (SNHPC) Senior Transportation Planner, Tim H. White, will be attending the Canadian Institute of Transportation Engineers Annual Conference in Montreal, Quebec from May 30th to June 3rd. While attending this conference entitled "Reshaping Transportation – The Human Element and Sustainability", Mr. White will be giving a presentation on the Safe Routes to School (SRTS) demonstration project that was conducted by the SNHPC at Hallsville Elementary School in Manchester. The demonstration project was designed to 1) identify and document student and parent attitudes toward walking to and from school, 2) develop recommendations for increasing the number of children who walk to and from school and 3) develop a plan for implementing recommendations to assist in continuation of the project at the school. The presentation will review the results of the demonstration project and document lessons learned by the SNHPC through its work on the SRTS project with Hallsville and the City of Manchester. For more information about the Safe Routes to School Program please contact Matthew P. Caron at 669-4664 or mcaron@snhpc.org.



Statewide Coordination of Community Transportation Services - Region 8 RCC Update



Southern New Hampshire Planning Commission (SNHPC) has been leading efforts to develop NHDOT/NHDHHS Statewide Coordination of Community Transportation Services Region 8 Regional Coordination Council (RCC). The State Coordination Council (SCC) recently sought the advice of the Attorney General's office regarding the legal status of the RCCs. They were informed that issues still remain to be resolved. While these issues are addressed, SNHPC, along with other stakeholders, is maintaining its commitment to support coordination of transportation in the region by participating in regular Region 8 RCC meetings.

Region 8 stakeholders are currently completing the steps required for official recognition of the RCC. Included in this process is the development of Bylaws to outline the structure of the Region 8 RCC. The January 2009 Region 8 RCC meeting included a work session to finalize the details of the Bylaws. The Bylaws were approved during the March 2009 RCC meeting. In addition to the passage of the Bylaws, a Region 8 RCC Memorandum of Understanding (MOU) was approved during the January 2009 meeting. The MOU serves as an instrument enabling stakeholders to formally commit to participate in the RCC process. The SNHPC is currently accepting signed MOUs from stakeholders. For more information, contact Matthew Caron at 669-4664 or mcaron@snhpc.org.